

The Complete Johnsonite Safe-T-First, Low-Location Evacuation System

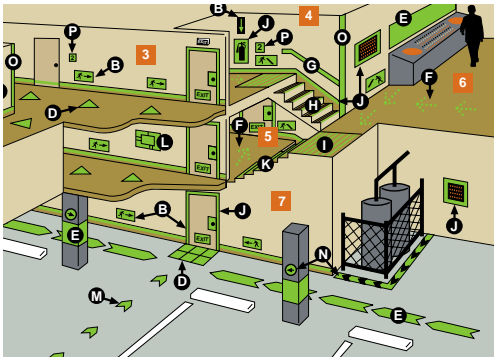


Illustration 1

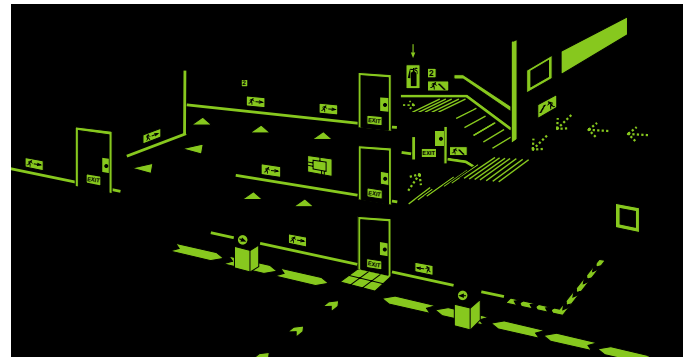


Illustration 2

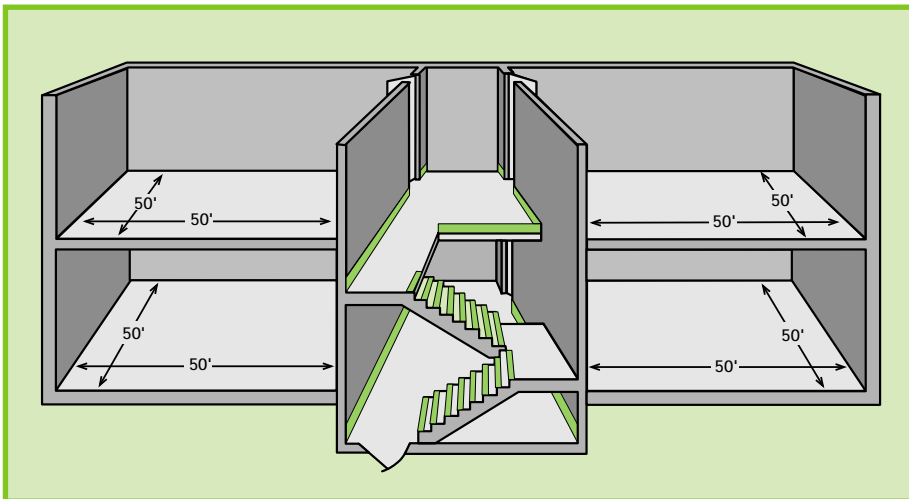
Johnsonite Safe-T-First System™ Featuring Permalight® Technology

- A. Carpet Cove Cap
- B. Signage and Path Markers
- C. Rubber Wall Base
- D. Vinyl Floor Tile
- E. Photoluminescent Paints
- F. Knob Inserts for Round Raised Disk Tile
- G. Hand Rail
- H. Rubber and Vinyl Stair Treads
- I. Tactile Warning Strip
- J. Guidance Strip
- K. Vinyl Stair Nosings
- L. Custom Evacuation Plan
- M. Epoxy Casting Resin
- N. Tapes and Self-Stick Strips
- O. Vinyl Corner Bumper Guards
- P. Floor Indicator Signage (ADA with Braille)

The schematic layout (Illustration 1) shown above with lights on utilizes the complete Johnsonite Safe-T-First System.

In Illustration 2, when a blackout situation occurs, occupants exiting the building at location (1) see the Safe-T-First System elements and will be guided through the door, along the corridors (2 and 3), through the exit door to the landing (4). They then see the stairs leading to the ground level door (5) and exit to safety. Occupants at location (6) follow the illuminated path along the corridor, then down the stairs to door (5) and exit to safety. Occupants in the basement area see the path markers leading them to the door at location (7) and out to safety.

Note: While this layout demonstrates the use of the complete Safe-T-First product offering, a non-electrical, photoluminescent, low-location escape routing plan can be accomplished using only certain specific components of the line.



Safe-T-First photoluminescent wall base and stair treads are indicated in green.

1. This illustration represents 10,000 square feet of space, with each section of each floor being 50 feet by 50 feet. Safe-T-First wall base is applied to the corridors only, which equates to 200 linear feet.

2. There are two floors with 16 steps, each step being 4 feet wide.

3. The incremental cost in servicing 10,000 square feet of space in this illustration, with 200 feet of Safe-T-First wall base and 16 Safe-T-First stair treads, as compared to traditional rubber wall base and stair treads, is approximately \$.06 per serviceable square foot.

4. Costs will vary depending on material utilized and local installation costs.